

INDIVI SUTTON

E u r y t h m y



E u r y t h m y

Indivi works with
natural pigment
powders that imbibe
the raw linen to create
paintings that are
resonant of
experience and
emotion being
frequencies of the
invisible.



About the Artist

Indivi (b.2000, New York, USA) resides in both Sydney and New York. Indivi's practice originates from her education at the Rudolf Steiner School in New York City, where she was introduced to an enchantment of color which has been the foundation of a deep desire to explore its interpretation and evocativeness in her painting.





Indivi works with natural pigment powders that imbibe the raw linen to create paintings that are resonant of experience and emotion being frequencies of the invisible. The tenor of Indivi's work explores the nuance of emotional interdependence, the relationship between painting and memory.

Indivi made her debut at Sydney Contemporary 2022 in a group show with Saint Cloche Gallery. Her practice has been recognised by both the Rudolf Steiner College and Steiner Education Australia.

Eurythmy by Indivi Sutton

Embodying Rudolf Steiner's philosophical tenets as the foundational impetus for this body of work, Eurythmy by Indivi Sutton apprehends the profound that encompasses all facets of human existence. By allowing ourselves to be fully engaged in our surroundings, breathing slowly and deeply, it is possible to embrace the impermanence and transparency of the world around us. The practice of Eurythmy is the visible manifestation of the art of listening to heart-speak through gesture and spatial expression and embodying the inner essence and qualities of color, by giving them form through stretching and contracting. Eurythmy's practice aims to awaken in the human soul, birthing a feeling of being alive and to develop humanity's relationship with the spiritual dimensions of life.

Indivi's practice originates from her education at the Rudolf Steiner School in New York City, where the understanding of color was intrinsic to the ethos; the seasons provided a deep understanding of how light and color penetrate our beings. Indivi believes this engagement with each color in its pure form has manifested within her a sensory relationship with color and how it feels; not just seeing, but feeling the tones that live within an object, element, or place and in each breath. The paintings are of raw linen and pigment powders, where the pigment imbibes the raw linen, allowing the color its own expression. The colors that emerge onto the canvases for each work are formed from deep contemplation and observation of her surrounding world, the universal language of absence and presence, remembrance, and of hope and healing and essentially being human.

Eurythmy by Indivi holds the resonance of the natural world's imprint on our beings and explores the indivisible nature of color, gesture, and soul. The work seeks to unfold the individual pulse within each color, while also connecting the viewer with our intuitive being; in doing so, it enables a deeper attunement to the subtle energies, ultimately fostering greater empathy, compassion, and contributing to the evolution of humanity towards greater unity and harmony.



Breathing Into the Sacred

Pigment Powder on Raw Linen
66 x 74 inches



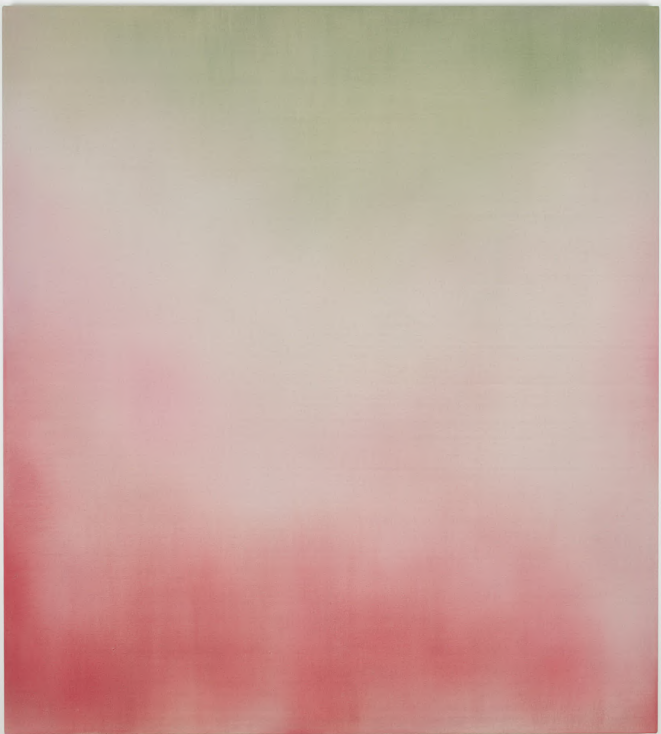
Silent Revelations of Being

Pigment Powder on Raw Linen
66 x 74 inches



284 Months of Being

Pigment Powder on Raw Linen
60 x 54 inches



Love, to Know Love

Pigment Powder on Raw Linen
60 x 54 inches



Found and Lost Simultaneously

Pigment Powder on Raw Linen
60 x 54 inches



The Heart With Knowing, Speaks

Pigment Powder on Raw Linen

60 x 54 inches



Feeling Miracles of the Still

Pigment Powder on Raw Linen
60 x 54 inches



As the Night Illuminates Knowing

Pigment Powder on Raw Linen
60 x 54 inches



Transference of Feeling

Pigment Powder on Raw Linen
36 x 32 inches



Oeuvre of One

Pigment Powder on Raw Linen
36 x 32 inches



Embraced by Solitude

Pigment Powder on Raw Linen
36 x 32 inches



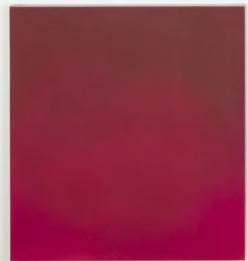
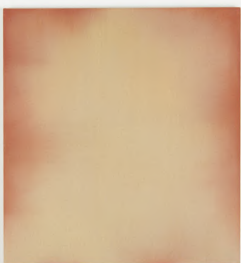
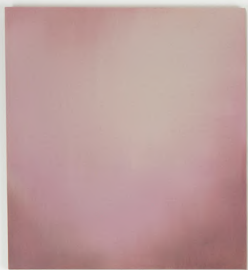
Deep Murmurs of Being

Pigment Powder on Raw Linen
36 x 32 inches



Essence of the Other

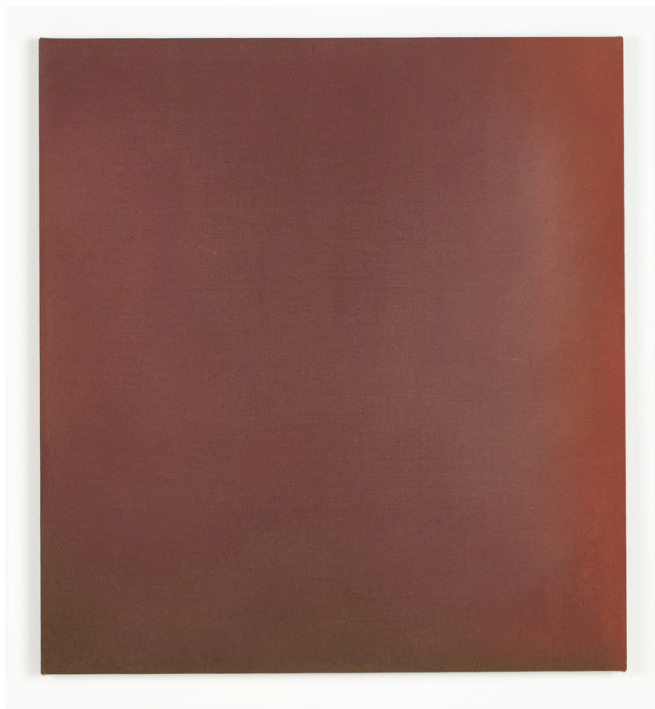
Pigment Powder on Raw Linen
36 x 32 inches





Perceptions of Wonder

Pigment Powder on Raw Linen
27 x 25 inches



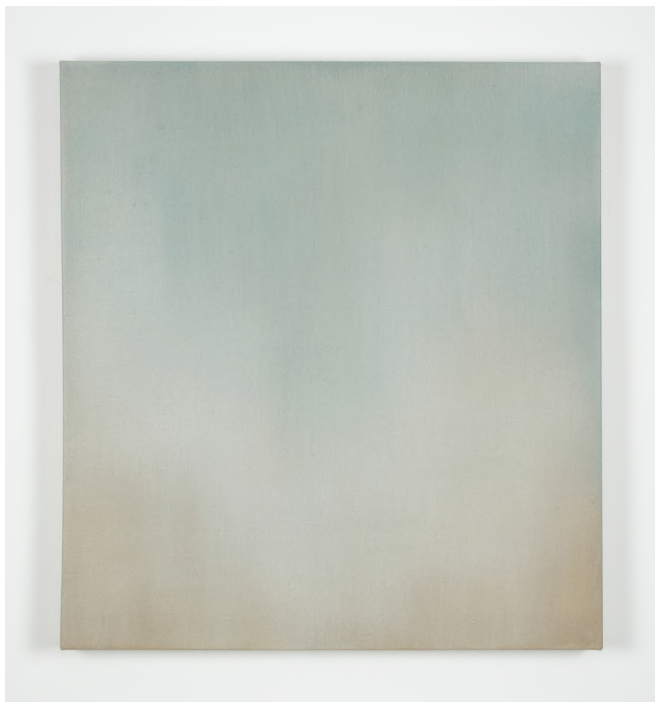
Musings Untold

Pigment Powder on Raw Linen
27 x 25 inches



Musings Silently Revealed

Pigment Powder on Raw Linen
27 x 25 inches



Floating in Evanescence

Pigment Powder on Raw Linen
27 x 25 inches



With Every Breath

Pigment Powder on Raw Linen
27 x 25 inches



Mysteries of Interior Time

Pigment Powder on Raw Linen
27 x 25 inches



Atmosphere for the Soul

Pigment Powder on Raw Linen
27 x 25 inches



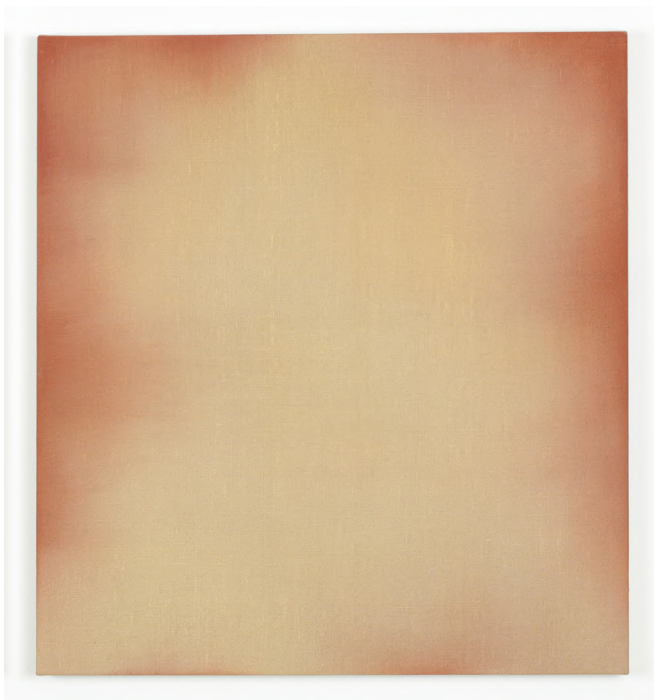
Light as the Shadow Falls

Pigment Powder on Raw Linen
27 x 25 inches



Time of Eternal Beauty

Pigment Powder on Raw Linen
27 x 25 inches



For All of Time

Pigment Powder on Raw Linen
27 x 25 inches



A Timeless Moment

Pigment Powder on Raw Linen
27 x 25 inches



As Between You and Me

Pigment Powder on Raw Linen
27 x 25 inches